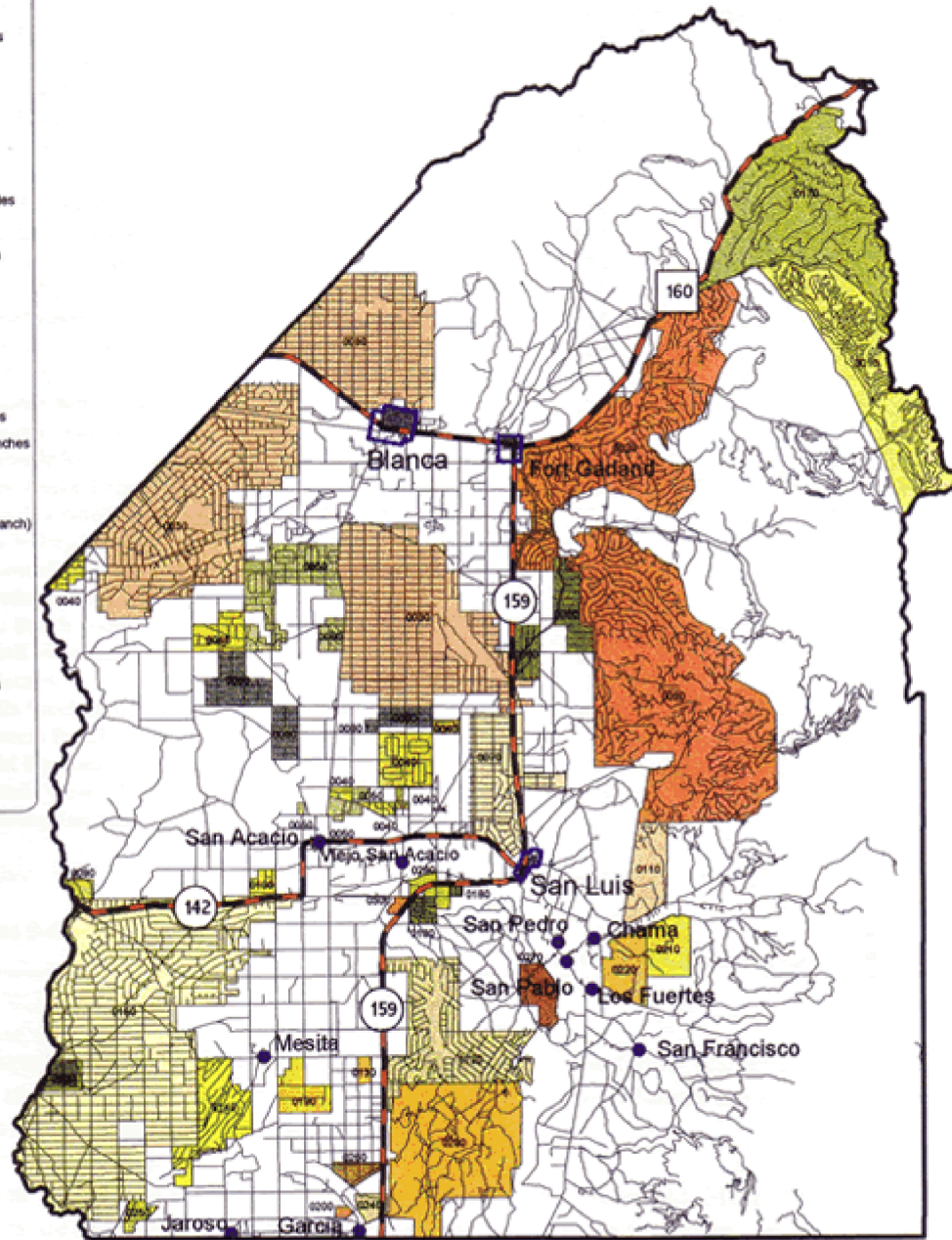


Costilla County Comprehensive Plan

Map 10 Subdivisions

- County Boundary
- Town Planning Area
- Other Towns
- Highways
- Platted Roads

- Subdivisions
- 0010 Forbes Park
 - 0020 Sangre De Cristo Ranches
 - 0030 San Luis Valley Ranches
 - 0040 Mount Blanco Estates
 - 0060 Trinchera Creek Estates
 - 0080 Top of the World
 - 0070 San Luis North Estates
 - 0080 Mount Blanco Valley Estates
 - 0090 Vista Grande Estates
 - 0100 Valley De Paz Subdivision
 - 0110 The Highlands
 - 0120 Wild Horse Mesa
 - 0130 W E Adams Subdivision
 - 0140 San Luis Estate South
 - 0150 Rio Grande Ranchos
 - 0160 Rio Grande River Ranchos
 - 0170 Forbes Wagon Creek Ranches
 - 0180 Sangre De Cristo Estates
 - 0190 Sports Valley Subdivision
 - 0200 R' Ranch (AKA Melbey Ranch)
 - 0210 Colorado Equities
 - 0220 Ewing Ranch South
 - 0230 Elk Park Ranch
 - 0240 Elm Estates
 - 0250 Costilla Creek
 - 0280 Reichwein Ranch Estates
 - 0270 M & M Ranches
 - 0290 Reichwein Ranches
 - 0300 Little Norway



Data Source
Costilla County GIS: 1999

Disclaimer

THIS MAP is for general planning purposes only, and is subject to updates and changes. Any user should check with the Costilla County Planning and Zoning Department prior to use to be sure that the data shown is current. Because of the scale of this map, any user should not rely on it for the exact definition of any boundary or division line shown on said map.

THIS MAP is based on information provided to the Department from numerous sources and the accuracy of which is not guaranteed by the County. Costilla County is not responsible and shall not be liable to the user for damages of any kind arising from the data or information shown on this map.

